

COMPOST FILTER TUBE

PRODUCT DESCRIPTION

Compost filter tubes are constructed by filling a tubular knitted mesh with organic composted filter media. Used primarily for temporary erosion/sediment control applications, where perimeter controls are required or necessary. The three-dimensional filter natural permeability allows water to seep through it while capturing sediment in its pore space and by creating a temporary ponding area behind its mass, slowing water velocity, and absorbing water pollutants such as phosphorus, metals, hydrocarbons, nutrients, and bacteria.

PALLET PROGRAM

Part No.	Description	Posts*	Wt.
Filtertube9x125	9" x 125 ft.	14	840
Filtertube 12x100	12" x 100 ft.	11	1,050
Filtertube18x50	18" x 50 ft.	8	902
Filtertube24x32	24" x 32 ft.	5	1,425

PRECUT LENGTHS

Part No.	Size	Pk.	LF/Pit.	Wt.
WSFT9x12	9"X12'	10 pcs.	120'	81
WSFT12x10	12"X10'	10 pcs.	100'	85
WSFT18X10	18"X10'	5 pcs.	50	77

*Number of Posts needed per pallet

9", 12" and 18" contain two equal length sections to total footage shown above.
24" contains four pieces 8 ft. each. Approx pallet dimension: 42" W x 48" L x 48" H
Delivery available for 9", 12", 18" and 24" Diameter

COMMON APPLICATIONS

Used primarily for temporary erosion and sediment control applications, where perimeter controls are required or necessary.

- Perimeter sediment control
- Slope, Inlet, and Storm drain protection
- Check dam to reduce soil erosion
- Paved or Frozen surface where trenching is impossible
- Concrete washout areas

FEATURES AND BENEFITS

- Meets DEP and PennDOT
 - High Performance, Low Maintenance, Cost Effective
- Easy to install, No trenching, install year-round
- Environmentally Friendly Green Technology
- Made from locally available recycled material
- Easy removal, minimal disposal costs



INSTALLATION GUIDELINES

1. Compost Filter Tube may be place on bare soil, grass, erosion control blankets, or paved surface.
2. Install perpendicular to storm water flow, across slope, swale, ditch, or channel.
3. Anchor to the ground using a 2"x2" Nominal 36" Hardwood Post every 10 ft. on center. Under concentrated flow conditions stake posts every 5 ft. on center.
4. Stakes shall be driven through the center of the Filter Tube and installed a minimum of 12" into the existing soil.
5. Edges of the Filter Tube shall be turned upslope to prevent flow around the ends of the Filter Tube.
6. For 2:1 slopes additional Tubes may be placed every 20-50 feet along the slope to further reduce erosion.
7. 12" Filter Tubes may be used for storm water ditch checks, and small channels (additional staking required, every 4 ft. on center).
8. 18" Filter Tubes may be used for Channels to control water velocity. Install perpendicular to flow at 150' intervals (staking required, every 4 ft. on center).
9. Typically a 9" Filter Tube can be used to replace a 24" Silt Fence, and 12" Filter Tubes can be used to replace a 36" Silt Fence.
10. Installed height of the Filter Tube in the field is as follows: 9" diameter=6.5" high; 12" diameter=9.5" high; 18" dia. = 14.5" high; 24" dia. = 19" high.

INSPECTION AND MAINTENANCE

Routinely inspect Compost Filter Tube after installation and runoff events to ensure adequate hydraulic flow-through, proper function and performance. Sediment should be removed once it reaches half the height of the Filter Tube.



**Erosion Control and
Geosynthetic Specialists**

1130 Robertsville Rd., Punxsutawney, PA 15767

Phone 814-938-5000

info@frankrobertsandsons.com

www.frankrobertsandsons.com

COMPOST FILTER TUBE SPECIFICATION SHEET

FILTER TUBE FABRIC PROPERTIES

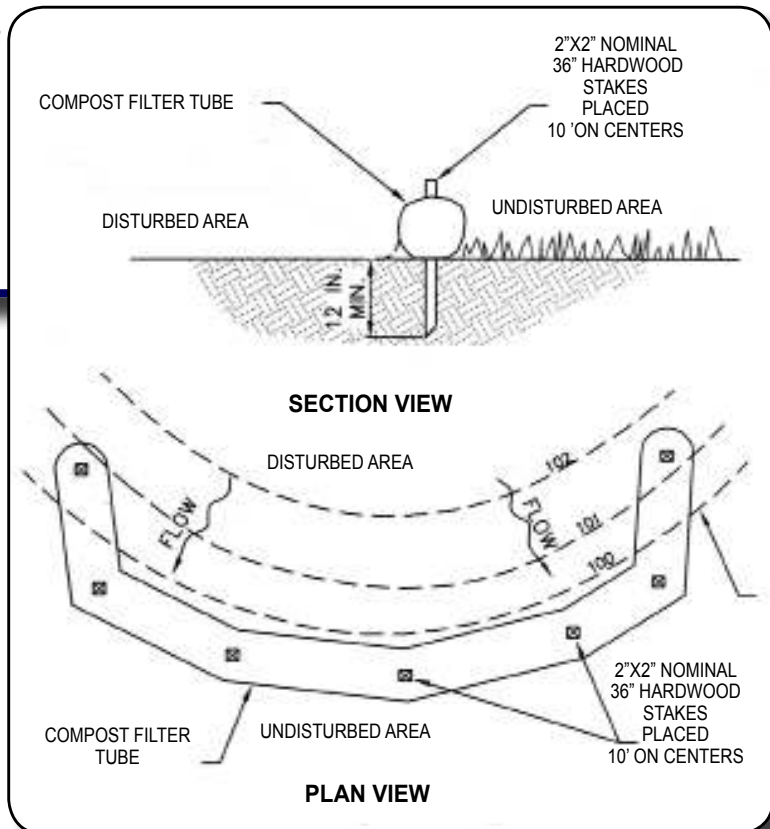
Material Type	Multi-Filament Polypropylene (MFPP)
Material Characteristics	Photodegradable
Filter Tube Diameters (in.)	9", 12", 18", and 24"
Mesh opening (in.)	< 3/8" Tubular Knit
Tensile Strength (psi.)	96 psi. ASTM D6241
UV Stability %Original Strength	100% at 1000 hr. ASTM G-155
Minimum Functional Longevity	15-24 months
Color	Black
Melting Point	482°F

COMPOST PROPERTIES

Moisture Content, dry weight basis	48%
pH	6.5
Soluble Salts (1:5 w:w)	55 mmhos/cm
Physical contaminants	<1%, dry weight
Organic Matter	89.4 %, dry weight
Particle size -passing 3/8 sieve	35.3%
Particle size -passing 1" sieve	98%

GUIDELINES FOR COMPOST FILTER TUBE PLACEMENT

LAND SLOPE	MAX.SLOPE LENGTH	DIAMETER
<50:1	250 ft.	9"
50:1 - 10:1	125 ft.	9"
10:1 - 5:1	100 ft.	12"
3:1 - 2:1	50 ft.	18"
>2:1	25 ft.	18"-24"



Erosion Control and Geosynthetic Specialists

1130 Robertsville Rd., Punxsutawney, PA 15767

Phone 814-938-5000

info@frankrobertsandsons.com

www.frankrobertsandsons.com